



Together, we make a difference

Newsletter: Fox Class

Class: Fox

Team: Ben, Charlotte, Kaydia, Jane and Jess

Student teacher: Hannah

Date: Spring Term

We ask for £10 contribution each term for healthy snacks and ingredients which are integral to our important communication and PSED work. All donations to class fund are greatly appreciated.



Thank you

Communication & Language

We will prioritise communication and language development in everything we do in Fox Class through a total communication approach.

Children will benefit from at least 2 discrete communication sessions per week, 1 class based and 1 streamed throughout the department, to develop skills at a personalised level.

This half term children will benefit from some community visits with Lauren to support our language development and social communication - this will be a sure hit with the class!



Literacy

Our literacy focus this term is fairytales—our favourite! We will explore a range of traditional tales and use these as our focus, reading and writing about them in different ways.

Children will have both reading and writing focused sessions in the week, these will cover a range of skills including fine motor and writing, comprehension and expressive and receptive language skills.

Children in Fox Class will access daily phonics to support their literacy development and this is streamed and delivered at an appropriate level to their need.

There are many opportunities to consolidate literacy skills throughout the week in many different ways.



Physical Development

In spring 1 we will be focusing on games, more specifically ball skills. We have noticed that the balls are very popular in the courtyard with the children so we predict that this will be a popular one! We will be throwing and kicking balls different distances and at different targets as well as working in pairs and teams.

Please ensure that your child has a PE kit including appropriate footwear as an integral part of physical education are the skills of dressing and undressing. **PE will be on a Wednesday morning.**

We will access soft play on a Monday morning.

Splash will be on a Wednesday afternoon, we aim to get your child in the pool at least every other week, please ensure their kit is in school and we will send home when wet!

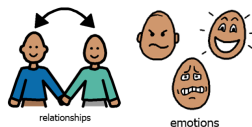


PSHE

The children will benefit from a discrete PSHE session focusing on relationships. This will include lots of turn taking and social opportunities as well as promoting positive mental health.

We will also be continuing to embed the Zones of Regulation to support children in Fox Class to both regulate their own emotions and recognise and understand emotions of others.

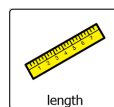
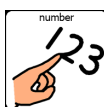
In fox class we prioritise building positive relationships and positive mental health as we believe this is the foundation to all learning.



Mathematics

We will continue to focus on number work each week to consolidate and develop these vital fundamental mathematical skills, each child will have their own specific targets to achieve whilst participating in a number of practical and engaging tasks.

This term, our measures focus is length and weight. We will be exploring these mathematical concepts as part of our fairytale focus so it will be a fun one! For example, using weighing skills to make porridge for Goldilocks and ordering beanstalks according to length.



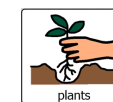
Science

Our science focus is living things and their environment—plants.



Children will have the opportunity to develop their scientific skills and understanding first hand with planting opportunities on our school grounds along with the chance to nurture them as they grow. We will also be exploring different plants and environmental factors that support their growth.

As always, science skills be will consolidated in outdoor learning sessions and community visits.



Expressive Arts & Design

Expressive arts are an integral part of our curriculum being incorporated in each area of the work that we do in Fox Class. We have daily sensory and creative opportunities including drama and movement.

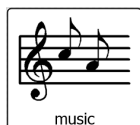
Art and music are also taught weekly:

Our art focus is:

3D art

Our music focus is:

Sound and silence/long and short sounds



Equipment needed

We will be accessing our outdoor spaces every day so it is important to have appropriate clothing and footwear, although we are praying for some good weather we can never be too sure can we!

It is also important to say that we will have lots of fun in Fox class and fun equals mess! We may be a little mucky when we come home but it's all with the best intentions!

PE will be on **Mondays** and **Splash** sessions on **Wednesday**.

Outdoor Learning is on Friday,

If you have any questions or need any help please don't hesitate to get in touch with Fox Class teachers -

Ben (Mon, Tues, Fri) bbrown@delamere.trafford.sch.uk

Charlotte (Wed, Thurs) cthomas@delamere.trafford.sch.uk

Key Dates:

- Week beginning 22nd January– KS2 Science week
- February– World's largest lesson
- Week beginning 5th February Mental health week
- 21st February Parents evening
- 23rd and 26th February class photographs
- Week beginning 4th March– Literacy week
- 7th March– world book day
- Week beginning 11th March- KS1 science

